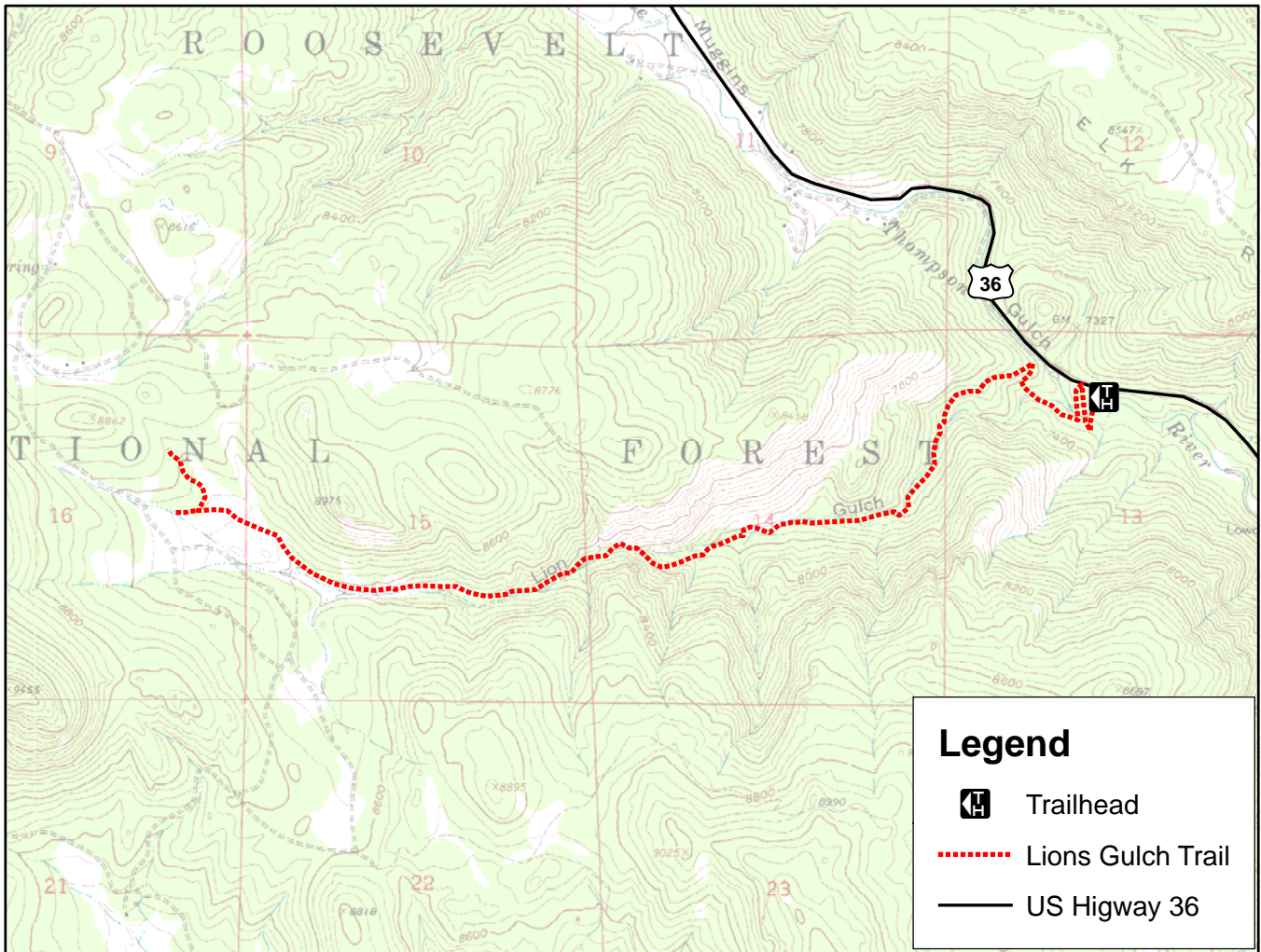


# Lions Gulch-USFS



Map is not for navigation. Reference only

## Trailhead Location:

The trailhead is located on Highway 36, seven miles east of Estes Park. The trailhead will be on the right.

## Trail Information:

The trail goes into Homestead Meadows where there are eight historical homesteads. There are interpretive signs at each homestead.

## Topographic Maps:

Panorama Peak

